



# City of Morgan Hill

## Master Street Tree Plan

**Prepared By:**

**Christina Raby**

**Urban Forestry Project Manager**

**City of Morgan Hill**

**17575 Peak Avenue**

**Morgan Hill, CA 95037**

**Date: December 20, 2018**

**Council Adoption: March 6, 2019**



“Funding for this project provided by the California Department of Forestry and Fire Protection as part of the California Climate Investments Program.”

# Table of Contents

- 1. Introduction.....3
  - Purpose of the Master Street Tree Plan
- 2. Master Street Tree Map.....4
- 3. Master Street Tree List.....5-8
- 4. Prohibited Street Tree List.....9-12

# Part I: Introduction

The intent of the Master Street Tree Plan is to foster comprehensive and sustainable tree plantings, through the use of drought-tolerant species, that have low maintenance needs. The Master Street Tree Plan designates tree species for each public street or segments of streets throughout the City based on spacing metrics available on each site. The tree species identified in the Master Street Tree Plan are provided as the requirement for what basic species of tree shall be planted in a given location. However, tree species may also have different varieties (Cultivars) that would fit different circumstances. Generally, the Master Street Tree Plan does not specify Cultivars of the species to allow for flexibility.

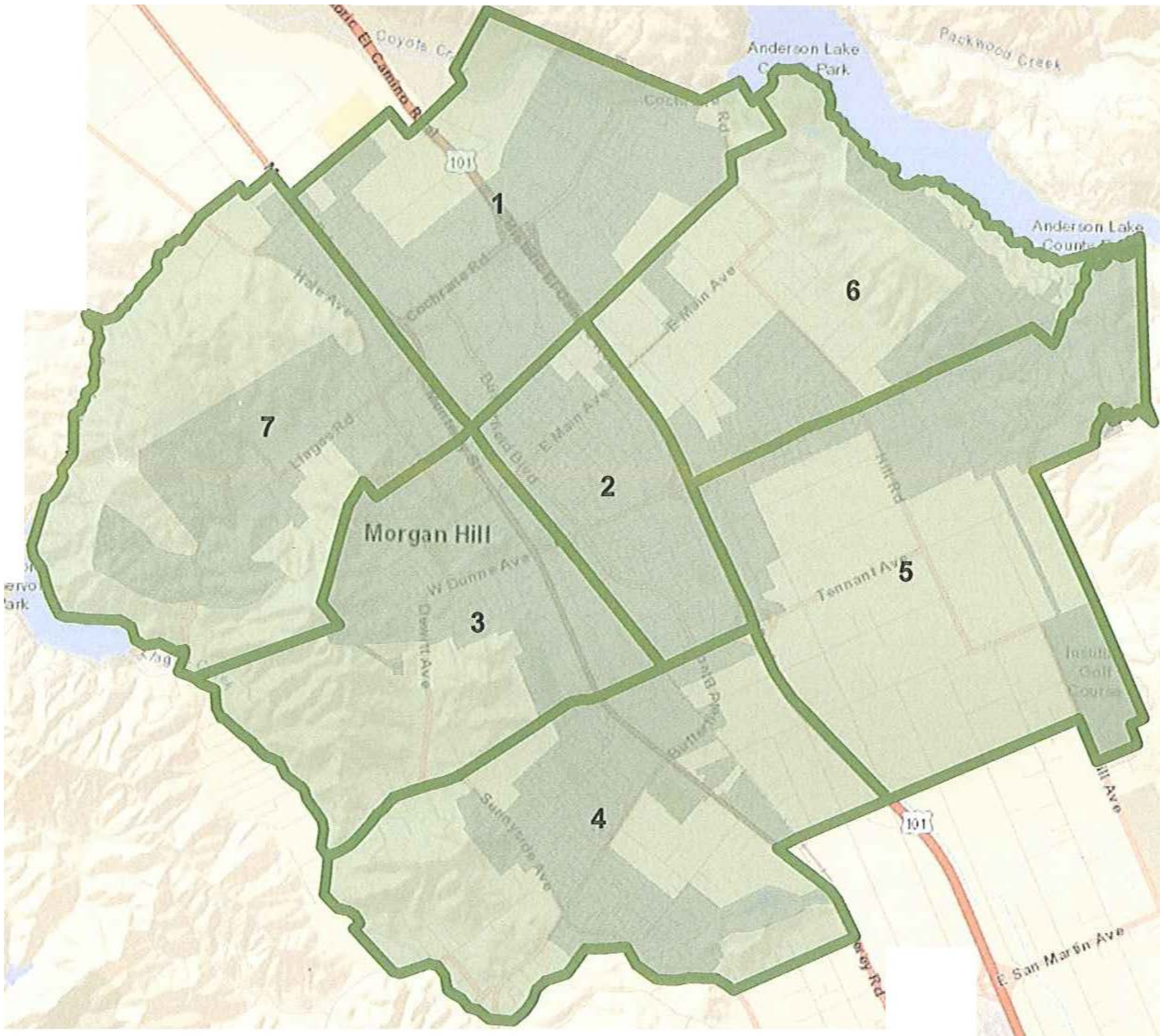
The City's Park Superintendent shall determine which species Cultivar is appropriate for the specific planting location. The tree species in the Master Street Tree Plan are those with the fewest faults that typically cause the least negative impacts to the community. The trees are expected to have long lives and retain their attractiveness into their maturity. The trees recommended are also reasonably free of insect infestation, and typically have less aggressive and invasive deep-root systems in order to reduce the potential for negatively impacting sewer lines, sidewalks, curb and gutters, and streets. However, any tree after several decades of growth may produce aggressive and invasive root systems.

The Master Street Tree Plan represents the community's collective vision for what Morgan Hill's urban forest will look and feel like as the community grows and prospers. Trees make a vital and affordable contribution to our sense of community, pedestrian-friendly neighborhoods, energy savings, air quality, and wildlife habitats. Urban Forests are the only infrastructure that continually increases in its value and benefits overtime. Thus, the City of Morgan Hill recognizes that the urban forest is not a self-renewable asset, but that it requires human intervention to preserve, protect and enhance. As the local government, it is our responsibility to foster and develop an urban forestry vision for every resident of Morgan Hill and the surrounding communities that depend on us. The City of Morgan Hill is committed to promoting the growth and care of its Urban Forest and the practice of applying the Master Street Tree Plan to all future tree plantings in the city.

The following are factors that were considered while selecting tree species suitable in Morgan Hill:

- ❖ Habitat value and attractiveness for pollinators
- ❖ Ecological benefits such as shelter, food, and breeding sites for both residential and migratory birds and wildlife
- ❖ Energy use reduction potential
- ❖ Carbon sequestration potential
- ❖ Storm water treatment potential
- ❖ City goals for water conservation
- ❖ City goals for canopy cover
- ❖ City's goal to encourage re-oaking of native and nonnative oak species
- ❖ Surrounding species theme and the past performance of that species
- ❖ Infrastructure conflicts
- ❖ Maintenance issues
- ❖ Aesthetics
- ❖ Need for age and species diversity
- ❖ Potential to become invasive

# Part II: Master Street Tree Map



# Part III: Master Street Tree List

Zone	Size	Botanical Name	Common Name	Remarks	Foliage	Spacing	
1	Planter Space 6' >	Aesculus californica	California Buckeye		Deciduous	20-30ft	
		Quercus agrifolia	Coast Live Oak		Evergreen	30ft	
		Quercus kelloggii	Black Oak		Deciduous	30ft	
		Quercus lobata	Valley Oak		Deciduous	30ft	
		Quercus suber	Cork Oak		Evergreen	30ft	
		Quercus virginiana	Southern Live Oak		Evergreen/partly Deciduous	30ft	
	Planter Space Between 4-6'	Acer rubrum 'Columnare'	Columnar Red Maple			Deciduous	20-30ft
		Acer x freemanii 'Jeffersed'	Autumn Blaze Red Maple			Deciduous	20-30ft
		Albizia julibrissin	Silk Tree			Deciduous	20-30ft
		Brachychiton populneus	Kurrajong	Predominant		Evergreen	20-30ft
		Celtis sinensis	Chinese Hackberry			Deciduous	20-30ft
		Ginkgo biloba	Maidenhair Tree	Males only		Deciduous	20-30ft
		Lophostemon confertus	Brisbane Box			Evergreen	20-30ft
		Ulmus parvifolia	Chinese Elm	Predominant		Evergreen/partly Deciduous	20-30ft
	Planter Space 4' <	Celtis laevigata var. reticulata	Western Hackberry			Deciduous	6-15ft
		Cercis occidentalis	Western Redbud			Deciduous	6-15ft
		Chilopsis linearis	Desert Willow			Deciduous	6-15ft
		Fraxinus dipetala	California Ash			Deciduous	6-15ft
		Heteromeles arbutifolia	Toyon			Evergreen	6-15ft
		Prunus ilicifolia	Hollyleaf Cherry			Evergreen	6-15ft
	2	Planter Space 6' >	Aesculus californica	California Buckeye		Deciduous	20-30ft
Quercus lobata			Valley Oak		Deciduous	30ft	
Quercus suber			Cork Oak		Evergreen	30ft	
Planter Space Between 4-6'		Acer rubrum 'October Glory'	October Glory Red Maple			Deciduous	20-30ft
		Acer x freemanii 'Jeffersed'	Autumn Blaze Red Maple			Deciduous	20-30ft
		Brachychiton populneus	Kurrajong			Evergreen	20-30ft
		Lophostemon confertus	Brisbane Box			Evergreen	20-30ft
		Lyonothamnus floribundus subsp. asplenifolius	Catalina Ironwood			Evergreen	20-30ft
		Nyssa sylvatica	Sour Gum	Predominant		Deciduous	20-30ft
		Pistacia chinensis	Chinese Pistache			Deciduous	20-30ft
		Rhus lancea	African Sumac			Evergreen	20-30ft
		Ulmus parvifolia	Chinese Elm	Predominant		Evergreen/partly Deciduous	20-30ft
		Planter Space 4' <	Celtis laevigata var. reticulata	Western Hackberry			Deciduous
Chilopsis linearis			Desert Willow			Deciduous	6-15ft
Heteromeles arbutifolia			Toyon			Evergreen	6-15ft
Prunus ilicifolia			Hollyleaf Cherry			Evergreen	6-15ft

3	Planter Space 6' >	Casuarina cunninghamiana	River She-Oak		Evergreen	30ft	
		Quercus agrifolia	Coast Live Oak		Evergreen	30ft	
		Quercus douglasii	Blue Oak		Deciduous	30ft	
		Quercus kelloggii	Black Oak		Deciduous	30ft	
		Quercus lobata	Valley Oak		Deciduous	30ft	
		Quercus wislizeni	Interior Live Oak	Predominant	Evergreen	30ft	
	Planter Space Between 4-6'	Acer rubrum 'October Glory'	October Glory Red Maple	Predominant	Deciduous	20-30ft	
		Arbutus 'Marina'	Marina Madrone		Evergreen	20-30ft	
		Brachychiton populneus	Kurrajong		Evergreen	20-30ft	
		Ginkgo biloba	Maidenhair Tree	Males only	Deciduous	20-30ft	
		Lophostemon confertus	Brisbane Box		Evergreen	20-30ft	
		Lyonothamnus floribundus subsp. asplenifolius	Catalina Ironwood		Evergreen	20-30ft	
		Nyssa sylvatica	Sour Gum	Predominant	Deciduous	20-30ft	
		Pistacia chinensis	Chinese Pistache		Deciduous	20-30ft	
	Planter Space 4' <	Adenostoma sparsifolium	Red shank	Predominant	Evergreen	6-15ft	
		Cercis occidentalis	Western Redbud		Deciduous	6-15ft	
		Fraxinus dipetala	California Ash		Deciduous	6-15ft	
Hetermeles arbutifolia		Toyon		Evergreen	6-15ft		
Prunus ilicifolia		Hollyleaf Cherry		Evergreen	6-15ft		
4	Planter Space 6' >	Aesculus californica	California Buckeye		Deciduous	20-30ft	
		Casuarina cunninghamiana	River She-Oak		Evergreen	30ft	
		Laurus 'saratoga'	Saratoga Laurel		Evergreen	20-30ft	
		Quercus agrifolia	Coast Live Oak		Evergreen	30ft	
		Quercus ilex	Holly Oak		Evergreen	30ft	
		Quercus kelloggii	Black Oak		Deciduous	30ft	
		Quercus lobata	Valley Oak		Deciduous	30ft	
		Quercus suber	Cork Oak		Evergreen	30ft	
		Quercus virginiana	Southern Live Oak		Evergreen/partly Deciduous	30ft	
	Planter Space Between 4-6'	Acer rubrum 'Columnare'	Columnar Red Maple		Deciduous	20-30ft	
		Acer rubrum 'October Glory'	October Glory Red Maple	Predominant	Deciduous	20-30ft	
		Acer x freemanii 'Jeffersed'	Autumn Blaze Red Maple		Deciduous	20-30ft	
		Celtis sinensis	Chinese Hackberry	Predominant	Deciduous	20-30ft	
		Laurus 'saratoga'	Saratoga Laurel		Evergreen	20-30ft	
		Nyssa sylvatica	Sour Gum	Predominant	Deciduous	20-30ft	
		Ulmus parvifolia	Chinese Elm		Evergreen/partly Deciduous	20-30ft	
	Planter Space 4' <	Celtis laevigata var. reticulata	Western Hackberry		Deciduous	6-15ft	
		Cercis occidentalis	Western Redbud		Deciduous	6-15ft	
		Chilopsis linearis	Desert Willow		Deciduous	6-15ft	
		Fraxinus dipetala	California Ash		Deciduous	6-15ft	
		Hetermeles arbutifolia	Toyon		Evergreen	6-15ft	
		Prunus ilicifolia	Hollyleaf Cherry		Evergreen	6-15ft	

5	Planter Space 6' >	Casuarina cunninghamiana	River She-Oak		Evergreen	25-30ft	
		Quercus agrifolia	Coast Live Oak		Evergreen	25-30ft	
		Quercus douglasii	Blue Oak		Deciduous	25-30ft	
		Quercus kelloggii	Black Oak		Deciduous	25-30ft	
		Quercus lobata	Valley Oak		Deciduous	25-30ft	
		Quercus suber	Cork Oak		Evergreen	25-30ft	
	Planter Space Between 4-6'	Acer rubrum 'Columnare'	Columnar Red Maple			Deciduous	20-30ft
		Acer rubrum 'October Glory'	October Glory Red Maple			Deciduous	20-30ft
		Arbutus 'Marina'	Marina Madrone			Evergreen	20-30ft
		Brachychiton populneus	Kurrajong			Evergreen	20-30ft
		Ginkgo biloba	Maidenhair Tree	Males only		Deciduous	20-30ft
		Lophostemon confertus	Brisbane Box			Evergreen	20-30ft
		Lyonothamnus floribundus subsp. asplenifolius	Catalina Ironwood			Evergreen	20-30ft
		Pistacia chinensis	Chinese Pistache			Deciduous	20-30ft
	Planter Space 4' <	Adenostoma sparsifolium	Red shank	Predominant		Evergreen	6-15ft
		Cercis occidentalis	Western Redbud			Deciduous	6-15ft
		Fraxinus dipetala	California Ash	Predominant		Deciduous	6-15ft
		Hetermeles arbutifolia	Toyon			Evergreen	6-15ft
		Prunus ilicifolia	Hollyleaf Cherry			Evergreen	6-15ft
6	Planter Space 6' >	Aesculus californica	California Buckeye			Deciduous	20-30ft
		Casuarina cunninghamiana	River She-Oak			Evergreen	30ft
		Quercus agrifolia	Coast Live Oak			Evergreen	30ft
		Quercus coccinea	Scarlet Oak	Predominant		Deciduous	30ft
		Quercus ilex	Holly Oak	Predominant		Evergreen	30ft
		Quercus lobata	Valley Oak			Deciduous	30ft
		Quercus suber	Cork Oak			Evergreen	30ft
		Quercus virginiana	Southern Live Oak			Evergreen/partly Deciduous	30ft
		Quercus wislizeni	Interior Live Oak			Evergreen	30ft
	Planter Space Between 4-6'	Acer rubrum 'October Glory'	October Glory Red Maple			Deciduous	20-30ft
		Celtis sinensis	Chinese Hackberry			Deciduous	20-30ft
		Laurus 'saratoga'	Saratoga Laurel			Evergreen	20-30ft
		Nyssa sylvatica	Sour Gum			Deciduous	20-30ft
		Pistacia chinensis	Chinese Pistache			Deciduous	20-30ft
		Ulmus parvifolia	Chinese Elm	Predominant		Evergreen/partly Deciduous	20-30ft
	Planter Space 4' <	Celtis laevigata var. reticulata	Western Hackberry			Deciduous	6-15ft
		Cercis occidentalis	Western Redbud			Deciduous	6-15ft
		Chilopsis linearis	Desert Willow			Deciduous	6-15ft
		Fraxinus dipetala	California Ash			Deciduous	6-15ft
Hetermeles arbutifolia		Toyon			Evergreen	6-15ft	
Prunus ilicifolia		Hollyleaf Cherry			Evergreen	6-15ft	

7	Planter Space 6' >	Aesculus californica	California Buckeye		Deciduous	20-30ft	
		Quercus agrifolia	Coast Live Oak	Predominant	Evergreen	30ft	
		Quercus ilex	Holly Oak		Evergreen	30ft	
		Quercus kelloggii	Black Oak		Deciduous	30ft	
		Quercus lobata	Valley Oak		Deciduous	30ft	
		Quercus suber	Cork Oak	Predominant	Evergreen	30ft	
		Quercus wislizeni	Interior Live Oak		Evergreen	30ft	
	Planter Space Between 4-6'	Acer x freemanii 'Jeffersed'	Autumn Blaze Red Maple			Deciduous	20-30ft
		Albizia julibrissin	Silk Tree			Deciduous	20-30ft
		Arbutus 'Marina' & menziesii	Madrone			Evergreen	20-30ft
		Celtis sinensis	Chinese Hackberry			Deciduous	20-30ft
		Ginkgo biloba	Maidenhair Tree	Males only		Deciduous	20-30ft
		Laurus 'saratoga'	Saratoga Laurel			Evergreen	20-30ft
		Lyonothamnus floribundus subsp. asplenifolius	Catalina Ironwood			Evergreen	20-30ft
		Ulmus parvifolia	Chinese Elm	Predominant		Evergreen/partly Deciduous	20-30ft
	Planter Space 4' <	Celtis laevigata var. reticulata	Western Hackberry			Deciduous	6-15ft
		Cercis occidentalis	Western Redbud	Predominant		Deciduous	6-15ft
		Chilopsis linearis	Desert Willow			Deciduous	6-15ft
		Fraxinus dipetala	California Ash			Deciduous	6-15ft
		Hetermeles arbutifolia	Toyon			Evergreen	6-15ft
		Prunus ilicifolia	Hollyleaf Cherry			Evergreen	6-15ft



# Part IV: Prohibited Street Tree List

Botanical Name	Common Name	Reason
<i>Abies amabilis</i>	Pacific Silver Fir	High Root Damage
Acacia	All Species	High Water-Use/High Root Damage
<i>Acer macrophyllum</i>	Bigleaf Maple	High Root Damage
<i>Acer platanoides</i>	Norway Maple	High Root Damage
<i>Acer platanoides</i> 'Cleveland'	Cleveland Norway Maple	High Root Damage
<i>Acer platanoides</i> 'Deborah'	Deborah Norway Maple	High Root Damage
<i>Acer platanoides</i> 'Drummondii'	Drummond Norway Maple	High Root Damage
<i>Acer platanoides</i> 'Emerald Queen'	Emerald Queen Norway Maple	High Root Damage
<i>Acer platanoides</i> 'Erectum'	Erectum Norway Maple	High Root Damage
<i>Acer platanoides</i> 'Faassen's Black'	Faassen's Black Norway Maple	High Root Damage
<i>Acer platanoides</i> 'Parkway'	Parkway Maple	High Root Damage
<i>Acer platanoides</i> 'Schwedleri'	Schwedleri Norway Maple	High Root Damage
<i>Acer platanoides</i> 'Superform'	Superform Norway Maple	High Root Damage
<i>Acer rubrum</i> 'Franksred'	Red Sunset Maple	High Root Damage
<i>Acer saccharinum</i>	Silver Maple	High Root Damage
<i>Acer saccharinum</i> 'Pyramidale'	Pyramidale Silver Maple	High Root Damage
<i>Acer saccharinum</i> 'Silver Queen'	Silver Queen Maple	High Root Damage
<i>Aesculus hippocastanum</i>	Common Horsechestnut	High Root Damage
<i>Aesculus hippocastanum</i> 'Baumannii'	Baumannii Horsechestnut	High Root Damage
<i>Agathis robusta</i>	Queensland Kauri	High Root Damage
<i>Ailanthus glandulosa</i>	Trees of Heaven	Plant
All CA Invasive Species	California Invasive Plant Council Webpage for Information	Invasive
<i>Alnus glutinosa</i>	Black Alder	High Root Damage

<b>Alnus rhombifolia</b>	<b>White Alder</b>	<b>High Root Damage</b>
<b>Alnus rubra</b>	<b>Red Alder</b>	<b>High Root Damage</b>
<b>Bischofia javanica</b>	<b>Bischofia</b>	<b>High Root Damage</b>
<b>Casimiroa edulis</b>	<b>White Sapote</b>	<b>High Root Damage</b>
<b>Ceiba speciosa 'Los Angeles Beautiful'</b>	<b>Los Angeles Beautiful Floss Silk Tree</b>	<b>High Root Damage</b>
<b>Celtis laevigata</b>	<b>Sugarberry</b>	<b>High Root Damage</b>
<b>Celtis laevigata 'All Seasons'</b>	<b>All Seasons Sugarberry</b>	<b>High Root Damage</b>
<b>Celtis occidentalis 'Prairie Pride'</b>	<b>Prairie Pride Common Hackberry</b>	<b>High Root Damage</b>
<b>Ceratonia siliqua</b>	<b>St. John's Bread (Carob Tree)</b>	<b>High Root Damage</b>
<b>Cercidiphyllum japonicum 'Pendula'</b>	<b>Weeping Katsura Tree</b>	<b>High Root Damage</b>
<b>Cinnamomum camphora</b>	<b>Camphor Tree</b>	<b>Very Large/High Root Damage</b>
<b>Conifers</b>	<b>All Species</b>	<b>Very large</b>
<b>Delonix regia</b>	<b>Royal Poinciana</b>	<b>High Root Damage</b>
<b>Ebenopsis ebano</b>	<b>Texas Ebony</b>	<b>High Root Damage</b>
<b>Erythrina x bidwillii</b>	<b>Shrub Coral Tree</b>	<b>High Root Damage</b>
<b>Eucalyptus</b>	<b>All Species</b>	<b>High Root Damage</b>
<b>Fagus sylvatica 'Dawyck'</b>	<b>Dawyck European Beech</b>	<b>High Root Damage</b>
<b>Fagus sylvatica 'Pendula'</b>	<b>Weeping European Beech</b>	<b>High Root Damage</b>
<b>Fagus sylvatica 'Purpurea Pendula'</b>	<b>Weeping Purple European Beech</b>	<b>High Root Damage</b>
<b>Ficus aurea</b>	<b>Strangler Fig</b>	<b>High Root Damage</b>
<b>Ficus elastica</b>	<b>Rubber Tree</b>	<b>High Root Damage</b>
<b>Ficus macrophylla</b>	<b>Moreton Bay Fig</b>	<b>High Root Damage</b>
<b>Ficus retusa</b>	<b>Cuban Laurel</b>	<b>High Root Damage</b>
<b>Ficus rubiginosa</b>	<b>Rusty-Leaf Fig</b>	<b>High Root Damage</b>
<b>Ficus sur</b>	<b>Cape Fig</b>	<b>High Root Damage</b>
<b>Fraxinus americana 'Autumn Applause'</b>	<b>Autumn Applause White Ash</b>	<b>High Root Damage</b>
<b>Fraxinus uhdei</b>	<b>Evergreen Ash</b>	<b>High Root Damage</b>
<b>Fraxinus velutina</b>	<b>Arizona Ash</b>	<b>High Root Damage</b>
<b>Fraxinus velutina 'Modesto'</b>	<b>Modesto Ash</b>	<b>High Root Damage</b>
<b>Fruit Trees</b>	<b>All Fruit Bearing Species</b>	<b>Litter/Public Safety Hazard</b>

<b>Gleditsia triacanthos var. inermis 'Halka'</b>	<b>Halka Locust</b>	<b>High Root Damage</b>
<b>Gleditsia triacanthos var. inermis 'Trueshade'</b>	<b>Trueshade Locust</b>	<b>High Root Damage</b>
<b>Harpephyllum caffrum</b>	<b>South African Wild Plum</b>	<b>High Root Damage</b>
<b>Juglans californica</b>	<b>California Black Walnut</b>	<b>Invasive</b>
<b>Juglans hindsii</b>	<b>American Black Walnut</b>	<b>Invasive</b>
<b>Juglans nigra</b>	<b>Black Walnut</b>	<b>High Root Damage</b>
<b>Juglans regia</b>	<b>English Walnut</b>	<b>Invasive</b>
<b>Liquidambar</b>	<b>All Sweet Gum</b>	<b>High Root Damage</b>
<b>Liquidambar styraciflua</b>	<b>American Sweet Gum</b>	<b>High Root Damage</b>
<b>Magnolia grandiflora</b>	<b>Southern Magnolia</b>	<b>Very Large/High Root Damage</b>
<b>Manilkara zapota</b>	<b>Sapodilla</b>	<b>High Root Damage</b>
<b>Morus alba</b>	<b>White Mulberry</b>	<b>High Root Damage</b>
<b>Morus alba 'Fruitless'</b>	<b>Fruitless Mulberry</b>	<b>High Root Damage</b>
<b>Morus nigra</b>	<b>Black Mulberry</b>	<b>High Root Damage</b>
<b>Morus rubra</b>	<b>Red Mulberry</b>	<b>High Root Damage</b>
<b>Nothofagus dombeyi</b>	<b>Dombey's Southern Beech</b>	<b>High Root Damage</b>
<b>Nothofagus obliqua</b>	<b>Roble Beech</b>	<b>High Root Damage</b>
<b>Olea europaea</b>	<b>Olive (Fruiting)</b>	<b>Litter/Public Safety Hazard</b>
<b>Palms</b>	<b>All Species</b>	<b>Plant</b>
<b>Paulownia kawakamii</b>	<b>Sapphire Dragon Tree</b>	<b>High Root Damage</b>
<b>Paulownia tomentosa</b>	<b>Empress Tree</b>	<b>High Root Damage</b>
<b>Persea americana 'Hass'</b>	<b>Hass Avocado</b>	<b>High Root Damage</b>
<b>Phellodendron amurense 'Macho'</b>	<b>Macho Amur Corktree</b>	<b>High Root Damage</b>
<b>Phytolacca dioica</b>	<b>Ombu</b>	<b>High Root Damage</b>
<b>Picea abies</b>	<b>Norway Spruce</b>	<b>High Root Damage</b>
<b>Picea breweriana</b>	<b>Brewer's Weeping Spruce</b>	<b>High Root Damage</b>
<b>Pinus (Pines)</b>	<b>All Species</b>	<b>High Water-Use</b>
<b>Platanus orientalis var. digitata</b>	<b>Cut Leaf Oriental Plane Tree</b>	<b>High Root Damage</b>
<b>Platanus x hispanica</b>	<b>London Plane</b>	<b>High Root Damage</b>
<b>Platanus x hispanica 'Liberty'</b>	<b>Liberty London Plane Tree</b>	<b>High Root Damage</b>
<b>Platanus x hispanica 'Yardwood'</b>	<b>Yardwood London Plane Tree</b>	<b>High Root Damage</b>
<b>Populus (Poplar Tree)</b>	<b>All Species</b>	<b>High Root Damage</b>
<b>Pterocarya stenoptera</b>	<b>Chinese Wingnut</b>	<b>High Root Damage</b>
<b>Pyrus kawakamii</b>	<b>Evergreen Pear</b>	<b>Fire Blight</b>
<b>Robinia (Locust)</b>	<b>All Species</b>	<b>High Root Damage</b>
<b>Salix alba</b>	<b>White Willow</b>	<b>High Root Damage</b>
<b>Salix alba 'Tristis'</b>	<b>Golden Weeping Willo</b>	<b>High Root Damage</b>

<b>Salix babylonica</b>	<b>Weeping Willow</b>	<b>High Root Damage</b>
<b>Salix babylonica 'Navajo'</b>	<b>Globe Navajo Willow</b>	<b>High Root Damage</b>
<b>Salix laevigata</b>	<b>Red Willow</b>	<b>High Root Damage</b>
<b>Salix lasiandra</b>	<b>Pacific Willow</b>	<b>High Root Damage</b>
<b>Salix lasiolepis</b>	<b>Arroyo Willow</b>	<b>High Root Damage</b>
<b>Salix matsudana</b>	<b>Hankow Willow</b>	<b>High Root Damage</b>
<b>Salix x blanda</b>	<b>Wisconsin Weeping Willow</b>	<b>High Root Damage</b>
<b>Schinus molle</b>	<b>Peruvian/California Pepper Tree</b>	<b>High Root Damage</b>
<b>Schinus polygamus</b>	<b>Chilean Pepper Tree</b>	<b>High Root Damage</b>
<b>Schinus terebinthifolius</b>	<b>Brazilian Pepper Tree</b>	<b>Invasive</b>
<b>Ulmus Americana</b>	<b>American Elm</b>	<b>High Root Damage</b>
<b>Ulmus crassifolia</b>	<b>Cedar Elm</b>	<b>High Root Damage</b>
<b>Ulmus davidiana var. japonica</b>	<b>Japanese Elm</b>	<b>High Root Damage</b>
<b>Ulmus glabra</b>	<b>Scotch Elm</b>	<b>High Root Damage</b>
<b>Ulmus hollandica</b>	<b>Dutch Elm</b>	<b>High Root Damage</b>
<b>Ulmus minor</b>	<b>Smooth-Leaf Elm</b>	<b>High Root Damage</b>
<b>Ulmus 'Morton Accolade'</b>	<b>Accolade Elm</b>	<b>High Root Damage</b>
<b>Ulmus procera</b>	<b>English Elm</b>	<b>High Root Damage</b>
<b>Ulmus pumila</b>	<b>Siberian Elm</b>	<b>High Root Damage</b>
<b>Umbellularia californica</b>	<b>California Bay Laurel</b>	<b>Invasive</b>